



Woodfield
CORPORATE CENTER

425 N. MARTINGALE

Suite 1050
13,359 SF

CBRE

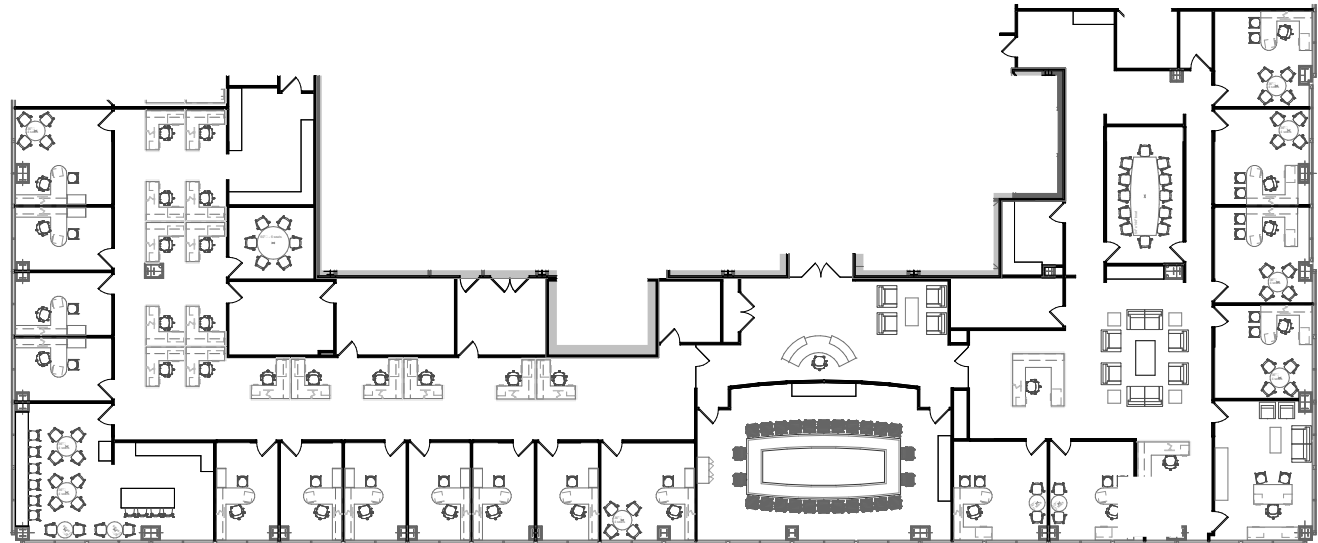
Dan Graham

Senior Vice President
847.706.4032
dan.graham@cbre.com

Michael Graham

First Vice President
847.706.4033
michael.graham@cbre.com

FULLY FURNISHED SPEC SUITE



9 - Executive Offices
9 - Private Offices
22 - Workstations
1 - Board Room
2 - Conference Rooms
2 - Breakrooms