



425 475

# Woodfield

CORPORATE CENTER

425 N. MARTINGALE

Suite 1310

1,726 SF

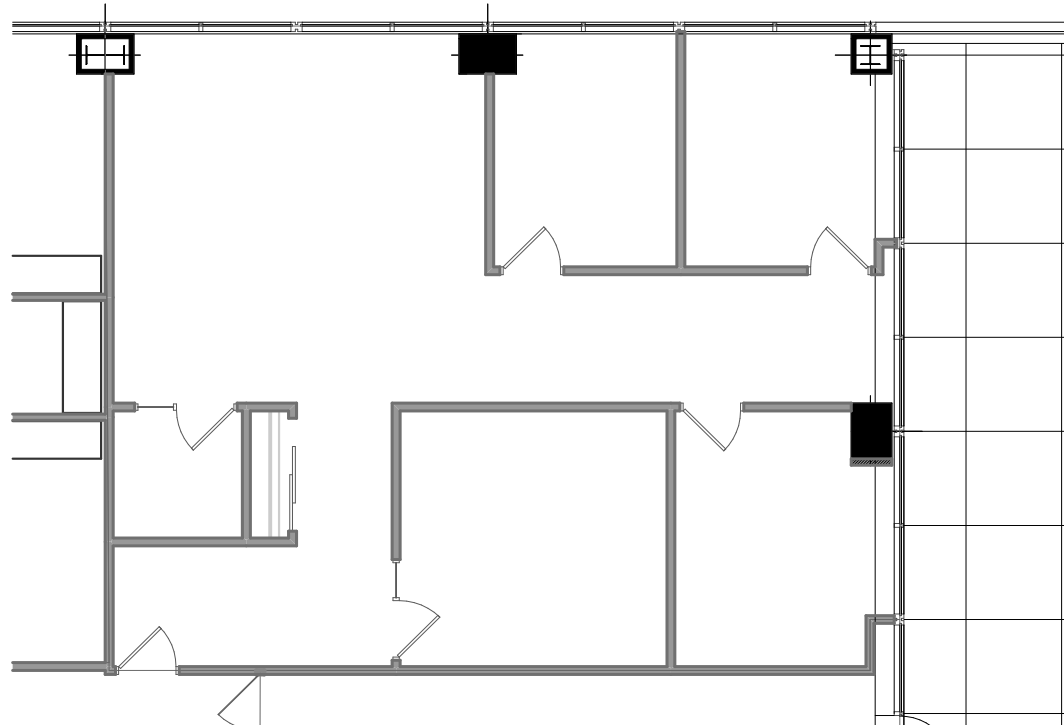
## CBRE

**Dan Graham**

Senior Vice President  
847.706.4032  
dan.graham@cbre.com

**Michael Graham**

First Vice President  
847.706.4033  
michael.graham@cbre.com



- Corner suite
- 3 offices, conference room and open space for workstations

